



Press Release – 17th March

Rowcrott Hospice celebrates the official opening of the refurbished inpatient unit

Rowcrott Hospice Trustees have declared the refurbished inpatient unit officially open at a small ceremony last week. Trustees, staff and contractors gathered together to celebrate opening of the refurbishment which has resulted in improved privacy and dignity for patients and even higher standards of infection control.

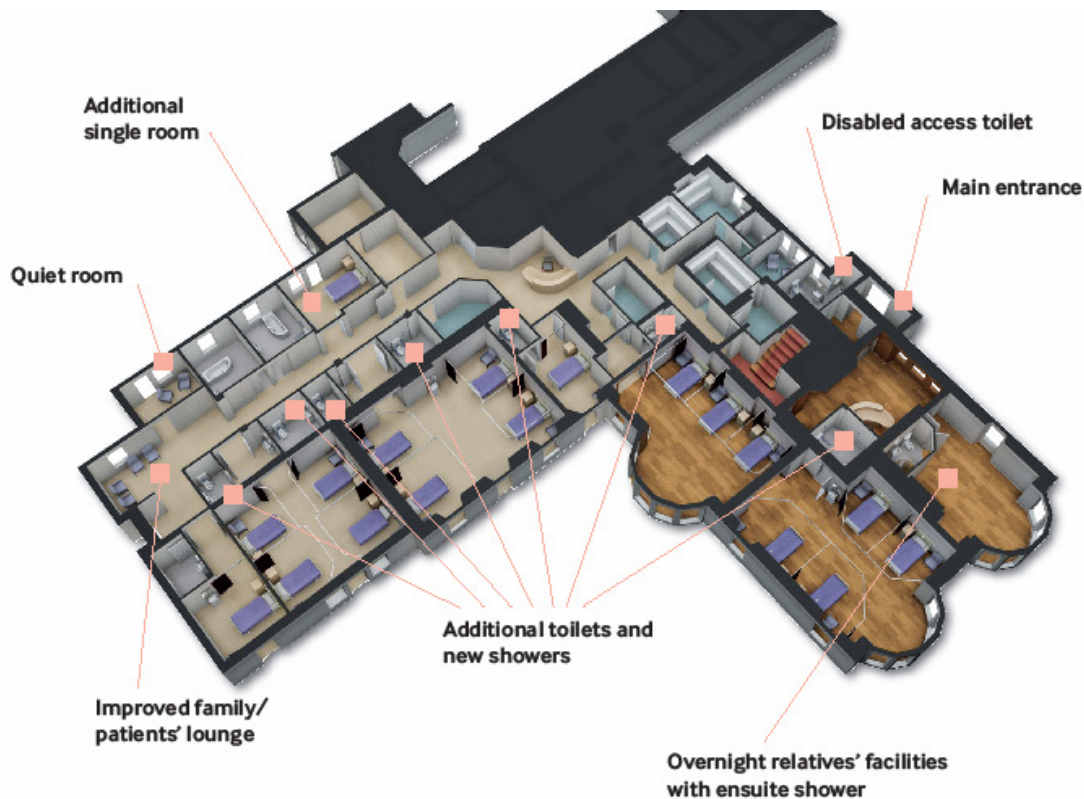
Theresa Isaac one of Rowcrott's longest serving members of staff attending the opening said:

'I've worked for Rowcrott for almost 28 years and have seen the hospice develop over the years. The refurbished inpatient unit represents a significant change to the hospice and one which will enhance the care for which Rowcrott is renowned. I am very proud to be part of the hospice team.'

In order to continue offering the high standards of care for which Rowcrott is renowned, a refurbishment project, designed by Kendall Kingscott and carried out by MBS, began in June 2009 to improve facilities for both patients and carers.

The refurbishment took place thanks to a £348,000 grant from the Department of Health, the generosity of local supporters and the Rowcrott Hospice Convalescent Homes Trust.

The refurbished unit has resulted in some key changes including an extra single room, four additional toilets and washing facilities, three new shower rooms, overnight ensuite facilities for relatives, improved lounge area for families and patients, a quiet room for staff to meet with patients and relatives and improved clinical preparation areas.



Rowcroft Hospice ward refurbishment

Rowcroft Hospice

Rowcroft Hospice is a charity, providing specialist care to people with life limiting illnesses living in Torbay and South Devon. The hospice was founded in 1982 and since then, with the support of local people, it has expanded to provide an even greater range of services. Care is provided, to over 1000 people every year, through our ward, hospice at home, community team, lymphoedema clinic and outpatient therapy services. This care includes physical, emotional and spiritual support to patients and their families. It costs £5.6 million to run Rowcroft for a year. The NHS funds 23% of our costs, but the rest – over £4.3 million - is raised from voluntary contributions. We must raise over £11,800 every day in order to provide the range of services on offer.

For more information please contact:

Rachel Bell, PR & Communications Manager on (01803) 217647 or email rachel.bell@rowcroft-hospice.org.uk